

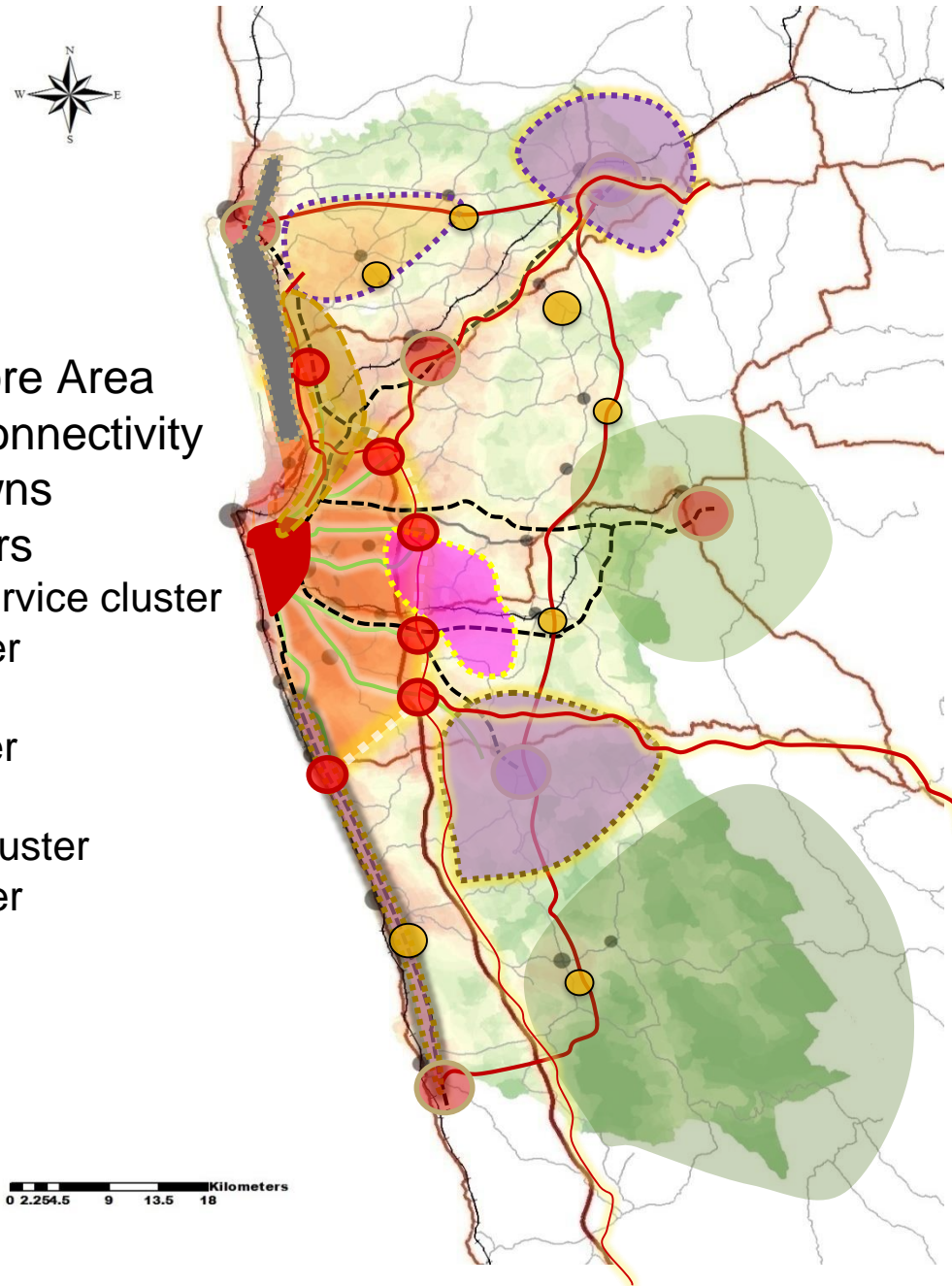


# Realizing the Transformative Power of The Western Development: Opportunities and Challenges

- Western Mega polis plan
- 11 project offices

# Conceptual Framework

- Define an urban edge
- Densify nodes on periphery of the Core Area
- Link with mass transit and improve connectivity
- Upgrade and densify key existing towns
- Develop specialized economic clusters
  - ✓ Colombo CBD – financial & service cluster
  - ✓ Industrial/manufacturing cluster
  - ✓ Airport related activity cluster
  - ✓ Science and technology cluster
  - ✓ Logistics corridor
  - ✓ Plantation related economic cluster
  - ✓ Forest related economic cluster
  - ✓ Tourism cluster





The image shows two men in safety gear (hard hats and high-visibility vests) looking at large blueprints spread out on a wooden surface. They are on a construction site, with the steel framework of a large building under construction visible in the background. A blue crane or lift is also partially visible. The text 'What makes large scale infrastructure development success' is overlaid in the center.

What makes large scale  
infrastructure  
development success

# Economic Viability & Cost Recovery

- Capital Intensive Investment
- Extend over many years
- Economy of scale

















Business Complex

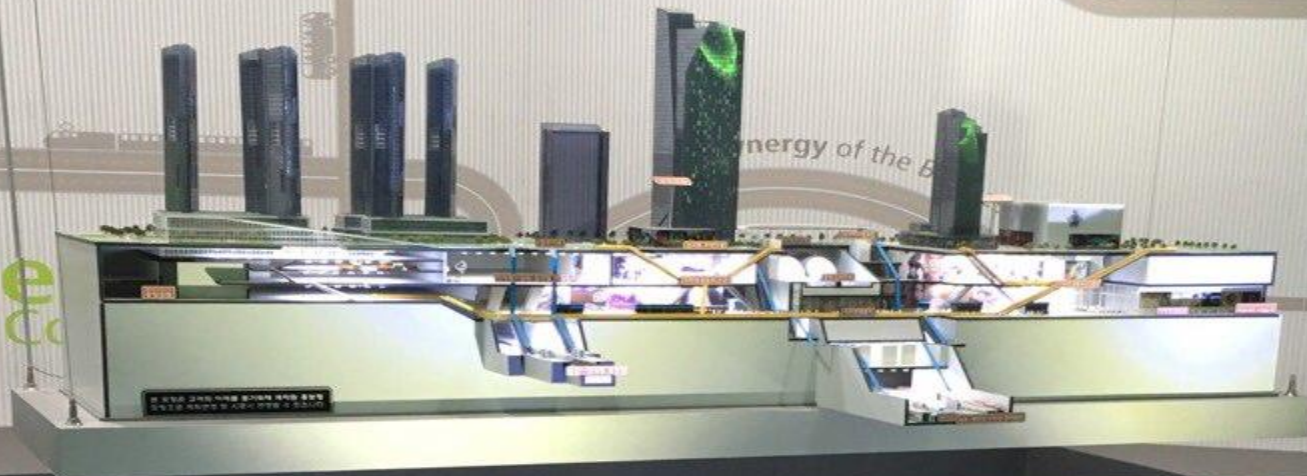
Business  
Complex



Business Complex

energy of the B

Busine









# Public Support

- Social and Environmental consideration,
- Transparency in design, planning and implementation stages.



# Institutional credibility and accountability

The background of the slide features a conceptual illustration. Two hands are shown in a firm handshake, symbolizing agreement or partnership. The hand on the left is wearing a white sleeve, and the hand on the right is wearing a grey sleeve. They are positioned over a document that has the word 'TRUST' printed vertically on the left side and 'CREDIBILITY' printed vertically on the right side. The entire background is rendered in a light, semi-transparent style.

- Various stake holders with different interests.
- Investment selection and resource allocation.
- Linkage effects.
- External finance and technical assistance.



# Institutional Capacity

1. Advanced technical expertise
2. Planning and budget allocation
3. Implementation
4. Monitoring and evaluation
5. Operation and maintenance
6. Aid / Donor management

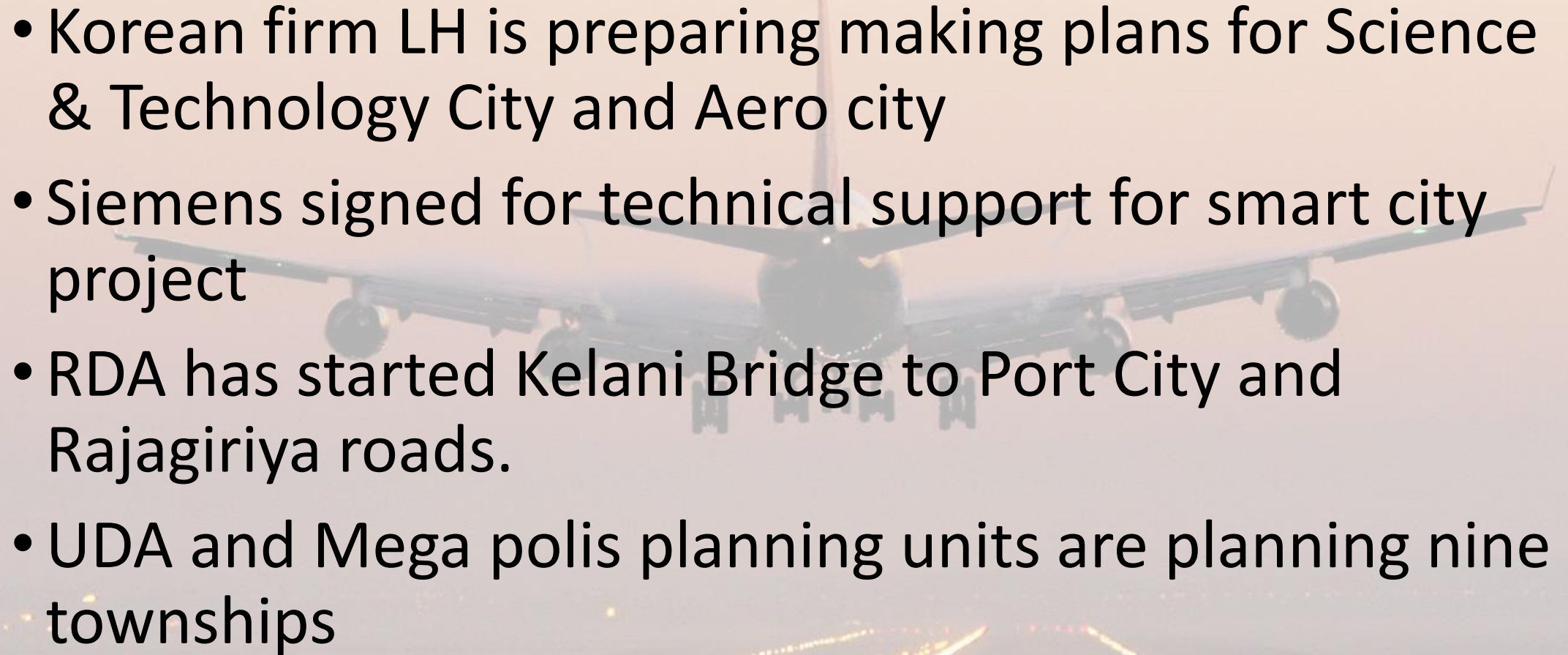




# Current state of readiness

- Conceptual plan is completed
- Establishment of 11 projects office in progress  
five offices are already established.
- Selection of investor's for one solid waste disposal project is completed. Other in the final stage
- Foreign funding for 35km of LRT is committed . RFP will be called for balance 40km soon



- 
- Korean firm LH is preparing making plans for Science & Technology City and Aero city
  - Siemens signed for technical support for smart city project
  - RDA has started Kelani Bridge to Port City and Rajagiriya roads.
  - UDA and Mega polis planning units are planning nine townships



A close-up photograph of two hands, palms up, holding a small, rectangular piece of white paper with deckled edges. The paper is held between the fingers of both hands, positioned centrally. On the paper, the words "Thank You" are written in a black, elegant cursive script. The background is a solid, dark color, which makes the hands and the white paper stand out. The lighting is soft, highlighting the texture of the skin and the paper.

*Thank You*